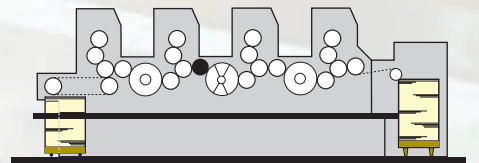


In Your Inker

Ink Duct Seals	3
Ink Fountain Blades	1
Ink Fountain End Plates	2
Ink Fountain End Plate Tape	2
Ink Fountain Foils / Liners	1
Ink Knives	4
Ink Scrapers	4
Ink Spatulas	4
Litho Ink Knives	5
Perfect Print Varnish	6
Protective Strips	3
Tesamol Tape	3
Tower Coater Blades	5
VEGRA® Color Thix	6



Ink Fountain Blades

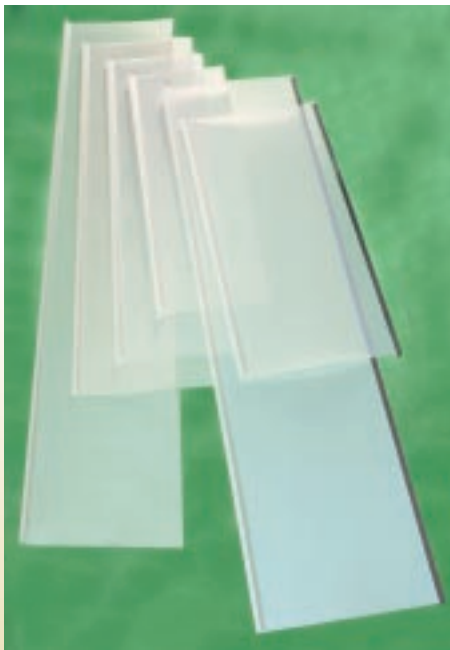
When you send your blade to us, the worn blade is removed from the original base and refitted with a remanufactured* blade that insures optimum results.

<u>Superior Part #</u>	<u>Press Description</u>
38.008.017	KORD 64
42.008.017	GTO 46
52.008.017	GTO 52
58.008.017	HE - SORKZ
63.008.017	HE - MO 25
66.008.017	HE - 40 - SORSZ
76.008.017	SORD - SORDZ

*New blades are also available; Please call to inquire.



Ink Fountain Liners



Polyester film liners that are highly wear resistant and accurately formed to insure a proper fit every time. Special thicknesses are available for UV ink.

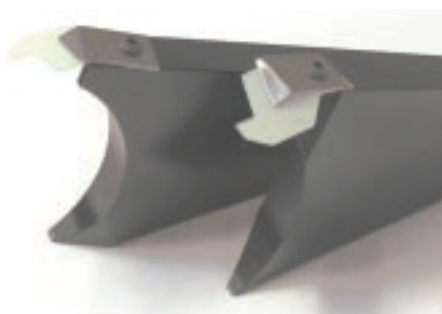
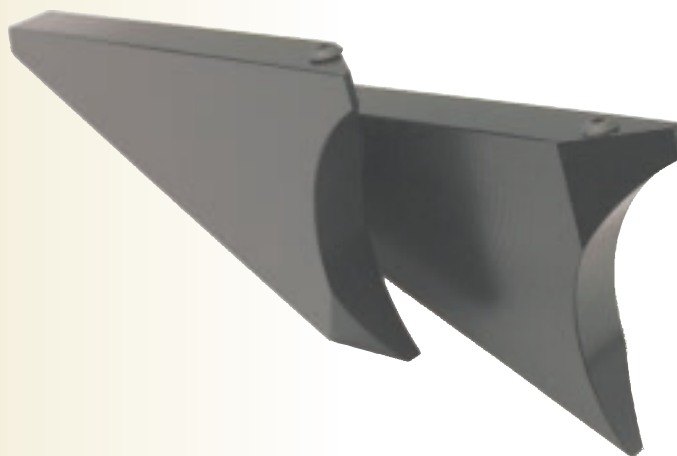
<u>Superior Part #</u>	<u>Press Type</u>
DI.024	Quickmaster 46
89.024	Speedmaster & GTO-52
89.024 CD	Speedmaster 52 CD
63.024	MO-65
73.024	Speedmaster 72-74
73.024 CD	Speedmaster 74 CD
71.024	Speedmaster 102
71.024 CD	Speedmaster 102 CD
76.024	SORD / SORM
5E.024	Web 8 (W/F)
7E.024	Web MC 110 (W/F)
11E.024	Web MC 130 (W/F)
9E.024	Web 16 (W/F)

The new Heidelberg 105XL liners (75.024) are available!

Ink Fountain End Plates

Sets of matching plates engineered from high tech polymers to demanding tolerances, insuring proper fit and performance in your equipment.

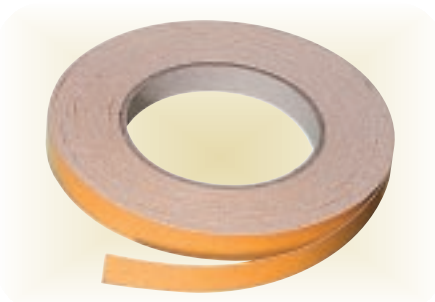
<u>Superior Part #</u>	<u>Press Description</u>
41.008	HE 102 & HE 72 (old style)
42.008	GTO-52
43.008	MO-65
46.008	Quickmaster 46
5E.008	Web 8
74.008	HE 74
89.008	DI 46 & SM 52
91.008	HE 102 & HE 72 (new style)
9E.008	Web 16
74.008 CD	HE 74 CD



Accessories:

91.008.033	Plastic Ink Wipes
91.008.035	End Plate Clips
00.500.178	End Plate Screws

End Plate Tape



<u>Superior Part #</u>	<u>Part Description</u>
8044	Tape for Ink Fountain End Plates / 72 yards per roll

Everything you need for your ink fountain!



CPC Protective Strips

Protective Plastic Strips with adhesive backing which are used to protect the keys on Heidelberg CPC ink fountains.

<u>Superior Part #</u>	<u>Description</u>
43128	Protective Strip - GTO
63128	Protective Strip - MO
93028	Protective Strip - 72 & SORM/Z
91028	Protective Strip - 102 & SORS/Z

Supplied in rolls of 12 pieces, cut to size to fit your press.

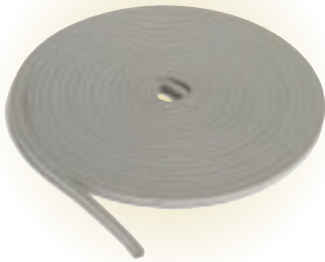
CPC Protective Strips for CD Presses



Engineered for your CD press, these cut to size plastic strips with adhesive backing protect the ink fountain keys on your Heidelberg press.

<u>Superior Part #</u>	<u>Description</u>
45071	SM 52 - CD
45072	SM 74 - CD
45073	SM 102 - CD

CPC Tesamol Foam Tape



Foam Tape with adhesive backing for CPC ink fountains. 33-foot roll allows you to custom cut the tape to fit your press.

Superior Part #: 8043

Ink Duct Seals



For your Kompac® System. Made of Teflon® to withstand exposure to harsh chemicals.



<u>Superior Part #</u>	<u>Description</u>
P31169	Kompac® Ink Duct Seals Heidelberg GTO-MO

<u>Superior Part #</u>	<u>Description</u>
P392370	Kompac® Ink Duct Seals Ryobi/ABDICK/Hamada

We can supply all your ink system needs!



Quality • Service • Value

Printer's Ink Knives

LAMSON INK KNIVES #900



Semi-flexible carbon steel blades
Available in 4, 6, 8, 10 and 12 inch lengths

FLEX BLADE INK KNIFE



- 2F-1-1/2 - Blade 1-1/2" wide x 3-5/8" long
- 2F-2 - Blade 2" wide x 3-3/4" long

LAMSON INK SPATULAS



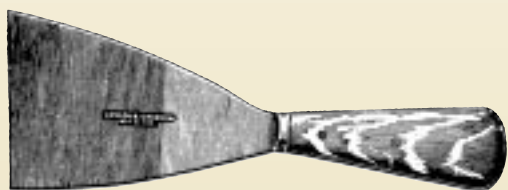
- 9003 - Flexible carbon steel with smooth finish
 - 6501 - Flexible stainless steel with smooth finish
- Available in 3, 4, 5, 6, 8, 10, 12 and 14 inch lengths

FLEXIBLE INK SCRAPERS



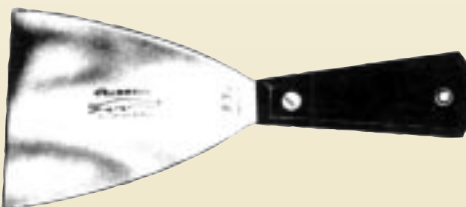
- 9806 E-3 - Blade 3" wide x 4-1/2" long
- 9806 E-4 - Blade 4" wide x 5" long
- 9806 E-5 - Blade 5" wide x 5-1/2" long

LAMSON INK SCRAPERS #9806



Polished, stiff, carbon steel blade with
walnut handles in 3, 4 and 5 inch lengths

STIFF BLADE INK SCRAPERS



- 3S-3 - Blade 3" wide x 4-1/2" long
- 3S-3-1/2 - Blade 3-1/2" wide x 4-1/2" long
- 4S-4 - Blade 4" wide x 4-1/2" long

LAMSON TABLET KNIVES



- 101K - 1-1/2" wide x 3" long round blade
- #2 - 1" wide x 4" long square blade

DEXTER PADDING KNIVES



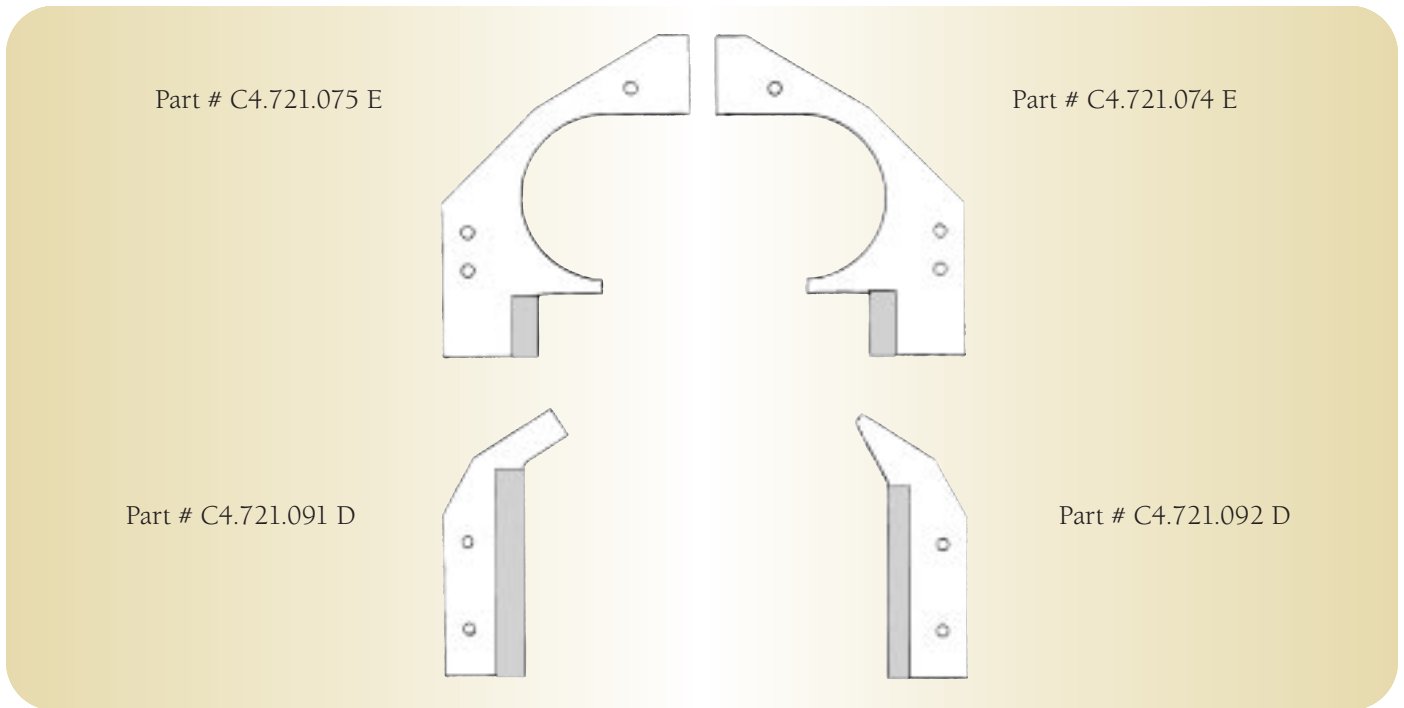
Sturdy, square point, high carbon steel knives
Available in 4, 5, 6 and 8 inch lengths

LAMSON PLASTIC INK KNIVES #403



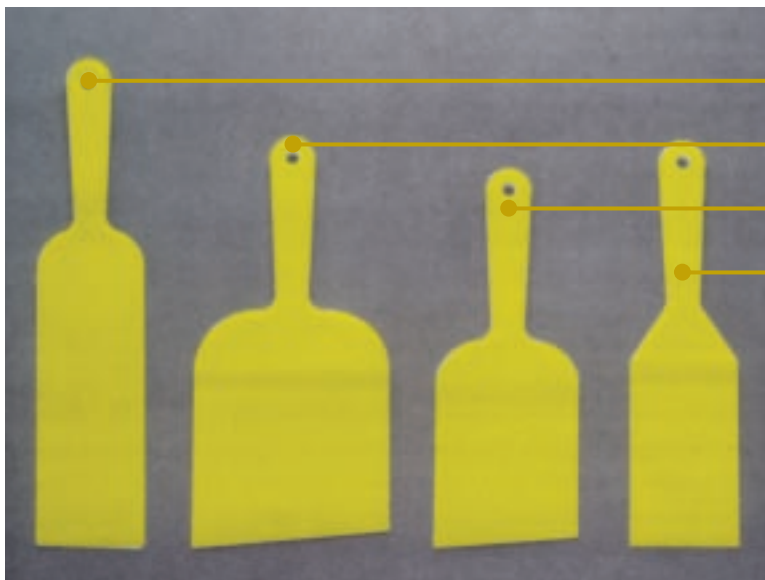
- Specially for new presses with delicate fountain and feed mechanisms that cannot tolerate contact with hard metal ink knives.
- Semi-flexible plastic blades .250" thick / 2-7/8" wide in a riveted walnut handle
- Available with 4, 6 and 8 inch blades

Tower Coater Blades



Litho Ink Knives

Our one-piece LITHO INK KNIVES are specially designed for handling ink. The solvent-resistant polypropylene construction is lightweight and will not damage your press. We make our knives in bright colors to maximize their visibility in the pressroom.



<u>Style</u>	<u>Blade Size</u>	<u>Overall length</u>
A	3" x 7-1/2"	13-1/2"
B	5-1/2" x 4-1/2"	11"
C	4" x 4"	11"
D	3" x 6"	11-1/4"

For other knife and spatula products, please call!

Perfect Print Varnish



Sterling's Perfect Print, No-Offset Varnish eliminates offset, sticking and picking. It does not change the color of the ink and works with all color and metallic inks. Permitting more color with safety, the varnish does not kill the gloss. There is also more coverage per pound of ink. Sterling's Varnish won't crystallize or dry on press or rollers.

Very rarely can a product be used by almost all printers, on virtually all presses, with all conventional ink types (rubber, oil, soy, etc.), and deliver the benefits of Perfect Print. Our job at Superior Press Parts is to save our customers time and money. We strongly recommend Perfect Print as a product that does both!

Here's what you can expect from using Perfect Print:

- 50-150% more impressions per pound of ink
- Sharpest halftones you have ever seen
- More brilliance in your colors
- Dramatically reduced drying time between runs
- Elimination of 80-90% spray powder usage

VEGRA® Color Thix

Do you struggle with the need to maximize use of your ink over extended periods of time? Have you lost performance of the ink due to this? Pressmen have struggled with solutions to this problem until now . . . **Color Thix** provides unmatched flexibility without losing contrast or affecting drying properties in evaporation or absorption.

Color Thix delivers the ability to match ink consistency to your individual requirement. You can safely use between 3-10% to achieve these results:

- Reduces tack without thinning
- Improves ink travel off rollers
- Allows printing at top machine speeds
- Enables printing of smooth solids on poor quality stock

Color Thix is the ideal additive to adapt inks to the needs of various print substrates. Try it today!

Our specialty ink additives will save you time and money!



Quality • Service • Value